

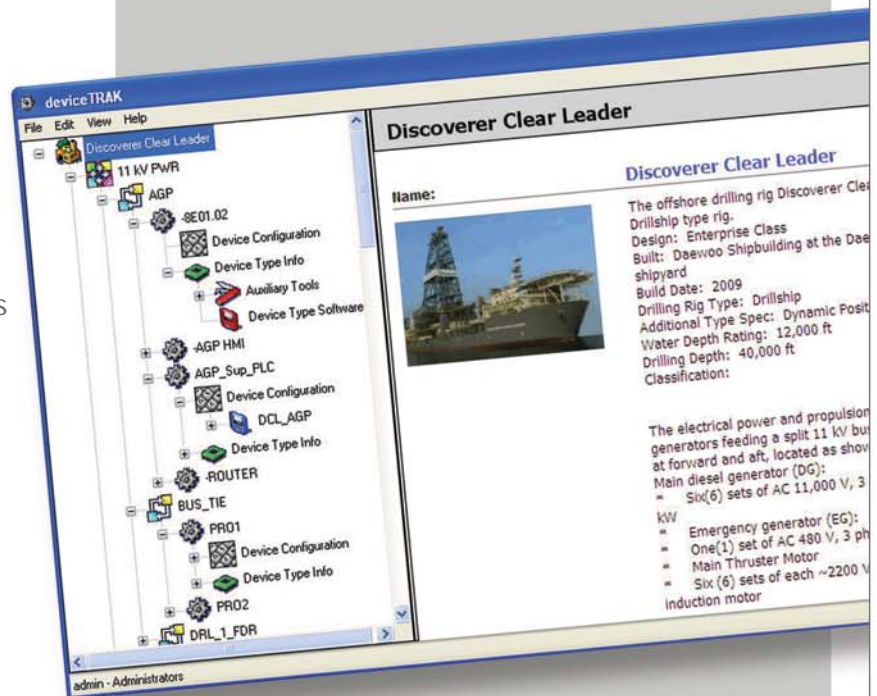
device TRAK

Is Your Plant Protected?

We all carry spare parts for replacement in the event of a component failure. But with the proliferation of automation and electronics used in modern plants, addressing system failures is not as simple as replacing a component. You can certainly replace PLCs, motor drives, adjustable circuit breakers and timers, but if the configuration files or programmable settings of that device are unknown, the device and possibly the entire system remain down.

deviceTRAK Provides The Protection You Need

deviceTRAK is a unique configuration management software application that archives and protects system-specific configurations for programmable devices. deviceTRAK identifies connection hardware and software for use with respective devices and the onsite location of these items for easy reference. Step-by-step procedures are provided for connection to, and interaction with, devices including "Load to Device", "Save to Flash", "Restore Configuration File" and "Compare Configuration Files" to name a few. Original equipment manufacturers' documents are stored for reference as required and device images are displayed for additional verification of the programmable device being attended.



Product Key Features

- Captures** System-specific configuration data including interface auxiliary tools and software for every programmable device in the plant.
- Controls** Current and historical configuration files in a single location.
- Protects** Configuration files using a "Check-In" "Check-Out" password protected, vault feature including differing levels of accessibility.
- Offers** OEM documentation, verification images of devices and step-by-step procedures for connection to, and interaction with, configurable devices.



ENGINEERING INNOVATIVE SOLUTIONS

device TRAK

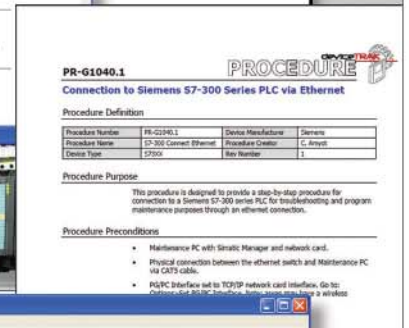
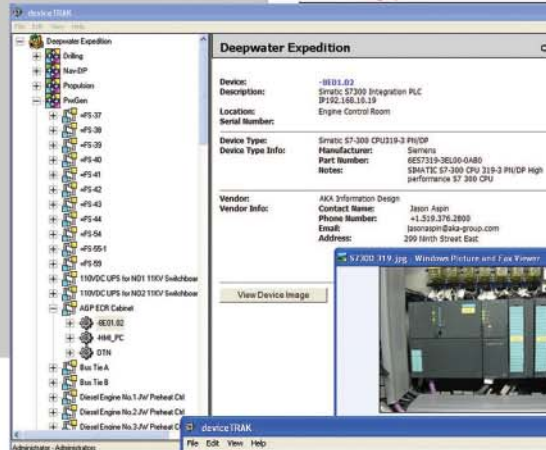
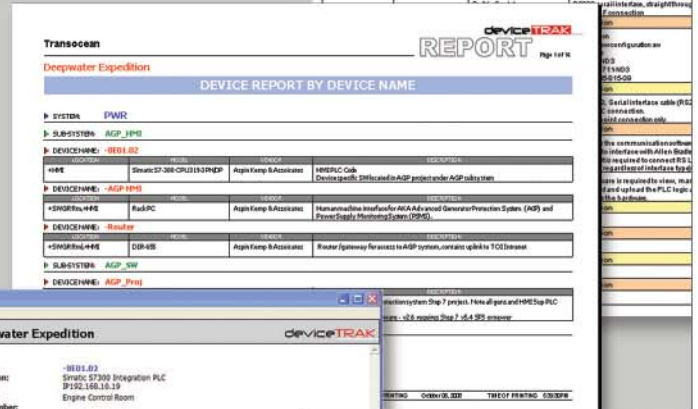
The Process

AKA provides the following:

- The software product shell ready for population;
- Professional installers for population;
- Assurance that all information is current and accurate;
- Expert training and guidance to assist end users in utilization of the *deviceTRAK* database;
- Device reports for reflection of devices captured and information archived; and
- Routine audits and reviews of protected data.

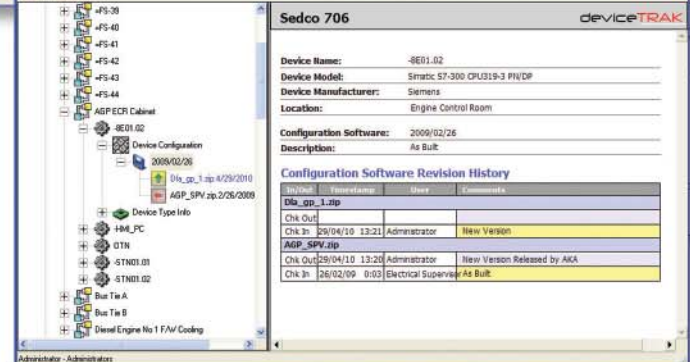


Manufacturer	Model	Auxiliary Tools & Support Software
Allen Bradley	AB MicroLogix-1000	Auxiliary Tools: ABFC to MicroLogix (g... 1701 P.MAG, Sec. C) Support Software: Description: Programming for SLC 500™ and Mini 2.7.11.01.01
Allen Bradley	MicroLogix-1000	Auxiliary Tools: ABFC to MicroLogix (g... 1701 P.MAG, Sec. C) Support Software: Description: Programming for SLC 500™ and Mini 2.7.11.01.01
Allen Bradley	PowerView 1000	Auxiliary Tools: PowerView software and related tools Flash Card: Description: PowerView software and related tools



Key Client Benefits

- Assists long term system operation. Plant maintainers can confidently diagnose faults and re-program defective devices using the correct configuration, auxiliary tools and step-by-step procedures.
- Allows a single controlled source for all programmable device data, alleviating the need to search for configuration files and the uncertainty caused of their unknown programming accuracy.
- Database is updatable from onsite or remote locations.
- User permissions managed by security levels.
- Individuals must "Check-Out" configuration files and provide update information before they may "Check-In" a new file. This guards against simultaneous editing or completion of changes for unknown reasons.
- Previous configuration files are kept in the archive such that these are available should there be a need to revert to previous configurations at any point.



- No guess work. Devices are identified in the database by the naming convention used onsite and on the device itself. Device images verify that proper information is being retrieved for the devices being attended.

Configuration files and programmable settings are essential spares. Make deviceTRAK part of your inventory.